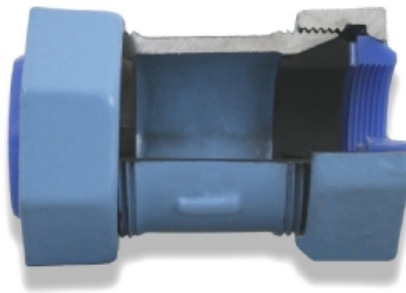


Love the Nature. Enjoy your Life

Standard series

Junior Mechanical fittings



Qingdao Rockpower Machinery Co., Ltd.

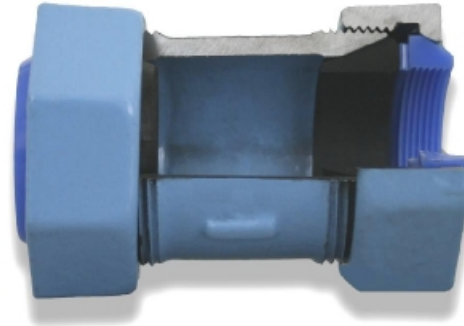
Junior Mechanical fittings

Standard series

The Standard series of Junior Mechanical fittings are designed to suit specified outside diameter tailored to your particular needs.

Typical pipes connectable with Standard Series Junior Mechanical Fittings includes:

Polyethylene Pipes for water Industry,
Epoxy Coated Steel Pipes for potable water,
Stainless Steel Pipes,
Galvanized Steel Pipes for water works,
Carbon Steel Pipes for ordinary piping.



Available in sizes from DN15 to DN50 for all kinds of fittings including Couplings, Elbows, Tees, Nipples and Caps etc supplying complete solutions for connection:

- Plain End to Plain End
- Plain End to male PT Thread
- Plain End to Female PT Thread
- Male PT Thread to Hose
- Plain End to Hose

with working pressure 1.0Mpa / 1.6Mpa for water and 0.4MPa for gas.

Features and Benefit:

■ Fast and easy piping work

Junior Mechanical fittings are designed for a wide variety of plain-ended pipes connection, no more need on-site threading or welding, just push on the pipe and tighten the caps, the fittings will form an effective permanent leak tight joint.

Piping work in narrow corners and in all weathers is possible now by using Junior Mechanical fittings.

■ Full protection and high reliability

Inside and outside surfaces are Cathode Electrophoresis Coated and then Epoxy Powder Coated to supply double protection.

Thread in body and caps are Cathode Electrophoresis Coated, elastomeric gaskets and lock rings are made of the best materials available for the duty to supply high reliability.

The Standard Series of Junior Mechanical Fittings made of malleable cast iron are designed to last the life of the pipeline in all weather conditions including cold region.

■ End load bearing

The Standard Series of Junior Mechanical Fittings are designed with Lock Rings made of Acetal Copolymer to bear End Load according to Type 2 performance requirements of the UK Water Industry Specification WIS-24-01.

■ Setting Angularity allowed

The Standard series of Junior Mechanical fittings are designed to allow upto 6° Setting Angularity.

The joint flexibility make long curve pipeline connection possible without special bends and allows piping work on rough or uneven terrain even in condition of ground settlement.

■ Silent and safe fluid handling

Gap at pipe ends and elastomeric gaskets can isolate and absorb noise and vibration caused by turbulent flow.

Junior Mechanical Fittings can be used as Unions to supply extra convenience when removing pipes for maintenance or rotation of pipe section for cleaning or wear reduction.



Qingdao Rockpower Machinery Co., Ltd.

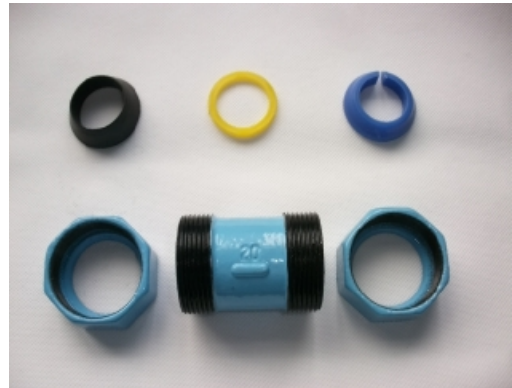
1506, Sino-Commerce Building, 100, Middle Hongkong Road, Qingdao, China
www.rockpower.cn

Tel.: (0532) 8592-1910 8592-1920 Fax.: (0532) 8592-1252
e-mail: rockson@rockpower.cn

Junior Mechanical fittings

Standard series

The Standard series of Junior Mechanical fittings are manufactured in our own factories under quality management system in accordance with ISO 9001:2008.



Parts and Material

Body and Caps

Malleable Cast Iron to BS 6681 Grade B32-10

Gaskets

EPDM: to BS2494:Type W&D

Suitable for Potable water, Sewage and Chemicals (not suitable for Petroleum products).

Suitable Temperature range: -40°C to +90°C.

NBR: to DIN3535-3

Suitable for Natural gas and Petroleum products (not suitable for Potable water).

Suitable Temperature range: -20°C to +100°C.

Lock rings

Acetal Copolymer (POM-K) Grade Celcon® M90 or equivalent.

OR

Aluminium Die Casting to JIS H 5302: 2006 Grade ADC 5.

Washers

Acetal Copolymer (POM-K) Grade Celcon® M90 or equivalent.

Coating

Body and Nuts are Cathode Electrophoresis Coated in Epoxy Paint from PPG Industries followed by Epoxy Powder Coating in WRAS approved material for double protection. Thread in body and nuts is protected by Cathode Electrophoresis Coating against corrosion.

Coating Thickness for Cathode Electrophoresis: $\geq 20\mu$

Coating Thickness for Epoxy Powder Coating: $\geq 150\mu$



Qingdao Rockpower Machinery Co., Ltd.

1506, Sino-Commerce Building, 100, Middle Hongkong Road, Qingdao, China
www.rockpower.cn

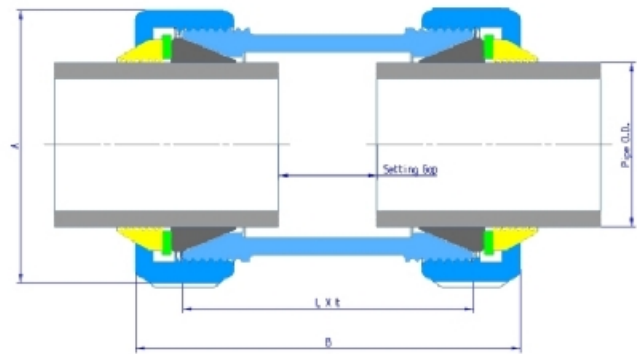
Tel.: (0532) 8592-1910 8592-1920 Fax.: (0532) 8592-1252
e-mail: rockson@rockpower.cn

Junior Mechanical fittings

Standard series

Coupling

Plain End to Plain End



Main Dimensions

Unit: mm

Size	Pipe O.D.		Coupling Overall		Body		Setting Gap		Weight
	SGP-PD *	HIVP * *	A	B	L	t	Min	Max	KG
15	24.7	22.0	49	73	55	3	3	12	0.3
20	30.2	26.0	55	79	60	3	3	7	0.4
25	37.0	32.0	66	85	65	4	4	12	0.5
32	45.7	42.0	73	91	70	4	5	21	0.7
40	52.6	48.0	80	97	75	4	5	25	0.9
50	64.5	60.0	96	103	80	5	7	31	1.5

* JWWA K 132: Polyethylene powder-coated steel pipe for water supply.

* * JIS K 6742: Unplasticized poly (vinyl chloride) (PVC-U) pipes for water supply
or other Imperial pipes including PVC pipe, PE Pipe, ABS pipe and Steel pipe.

The Coupling is designed without pipe stopper in the middle of the body allowing pipe line repair usage. The whole coupling can be slid completely over the end of the pipe to enable a repair pipe piece inserted.



Qingdao Rockpower Machinery Co., Ltd.

1506, Sino-Commerce Building, 100, Middle Hongkong Road, Qingdao, China
www.rockpower.cn

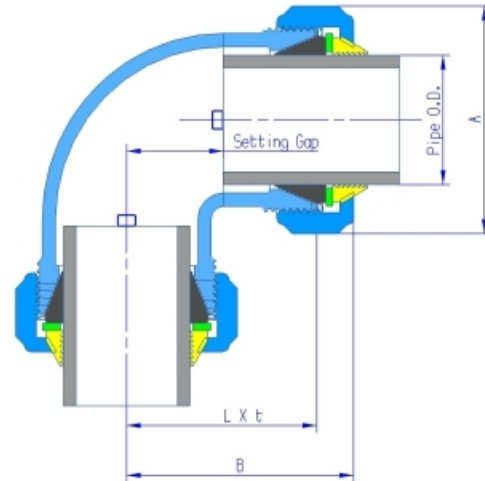
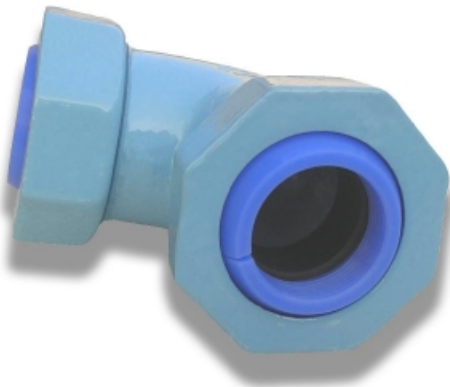
Tel.: (0532) 8592-1910 8592-1920 Fax.: (0532) 8592-1252
e-mail: rockson@rockpower.cn

Junior Mechanical fittings

Standard series

Elbow

Plain End to Plain End



Main Dimensions

Unit: mm

Size	Pipe O.D.		Coupling Overall		Body		Setting Gap		Weight
	SGP-PD *	HIVP * *	A	B	L	t	Min	Max	KG
15	24.7	22.0	49	51	42	3	16	20	0.3
20	30.2	26.0	55	58	48	3	20	21	0.5
25	37.0	32.0	66	64	54	4	23	27	0.6
32	45.7	42.0	73	73	62	4	28	38	0.9
40	52.6	48.0	80	80	69	4	32	44	1.2
50	64.5	60.0	96	91	79	5	39	55	1.9

* JWWA K 132: Polyethylene powder-coated steel pipe for water supply.

* * JIS K 6742: Unplasticized poly (vinyl chloride) (PVC-U) pipes for water supply
or other Imperial pipes including PVC pipe, PE Pipe, ABS pipe and Steel pipe.



Qingdao Rockpower Machinery Co., Ltd.

1506, Sino-Commerce Building, 100, Middle Hongkong Road, Qingdao, China
www.rockpower.cn

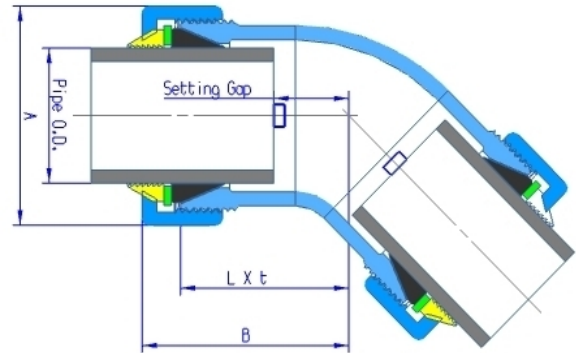
Tel.: (0532) 8592-1910 8592-1920 Fax.: (0532) 8592-1252
e-mail: rockson@rockpower.cn

Junior Mechanical fittings

Standard series

Elbow 45°, 22.5°

Plain End to Plain End



Main Dimensions

Unit: mm

Size	Pipe O.D.		Coupling Overall		Body		Setting Gap		Weight
	SGP-PD *	HIVP * *	A	B	L	t	Min	Max	KG
15X45°	24.7	22.0	49	47	38	3	12	16	0.3
20X45°	30.2	26.0	55	52	42	3	14	15	0.5
25X45°	37.0	32.0	66	56	46	4	15	19	0.6
32X45°	45.7	42.0	73	63	52	4	18	28	0.9
40X45°	52.6	48.0	80	68	57	4	20	32	1.1
50X45°	64.5	60.0	96	79	67	5	27	43	1.8
25X22.5°	37.0	32.0	66	56	46	4	15	19	0.6
32X22.5°	45.7	42.0	73	63	52	4	18	28	0.8
40X22.5°	52.6	48.0	80	68	57	4	20	32	1.2
50X22.5°	64.5	60.0	96	79	67	5	27	43	2.0

* JWWA K 132: Polyethylene powder-coated steel pipe for water supply.

* * JIS K 6742: Unplasticized poly (vinyl chloride) (PVC-U) pipes for water supply or other Imperial pipes including PVC pipe, PE Pipe, ABS pipe and Steel pipe.



Qingdao Rockpower Machinery Co., Ltd.

1506, Sino-Commerce Building, 100, Middle Hongkong Road, Qingdao, China
www.rockpower.cn

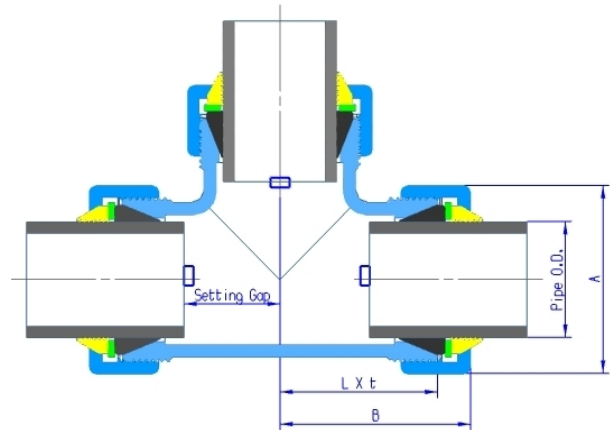
Tel.: (0532) 8592-1910 8592-1920 Fax.: (0532) 8592-1252
 e-mail: rockson@rockpower.cn

Junior Mechanical fittings

Standard series

Tee

Plain End to Plain End



Main Dimensions

Unit: mm

Size	Pipe O.D.		Coupling Overall		Body		Setting Gap		Weight
	SGP-PD *	HIVP * *	A	B	L	t	Min	Max	KG
15	24.7	22.0	49	49	40	3	16	22	0.5
20	30.2	26.0	55	54	44	3	19	28	0.6
25	37.0	32.0	66	60	50	4	22	32	0.9
32	45.7	42.0	73	68	57	4	27	33	1.2
40	52.6	48.0	80	74	63	4	30	37	1.6
50	64.5	60.0	96	84	72	5	36	42	2.6

* JWWA K 132: Polyethylene powder-coated steel pipe for water supply.

* * JIS K 6742: Unplasticized poly (vinyl chloride) (PVC-U) pipes for water supply or other Imperial pipes including PVC pipe, PE Pipe, ABS pipe and Steel pipe.



Qingdao Rockpower Machinery Co., Ltd.

1506, Sino-Commerce Building, 100, Middle Hongkong Road, Qingdao, China
www.rockpower.cn

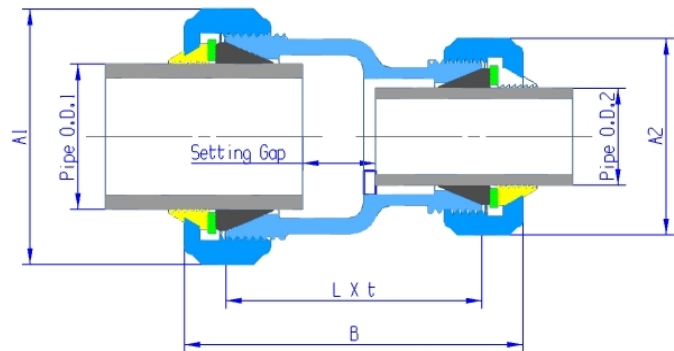
Tel.: (0532) 8592-1910 8592-1920 Fax.: (0532) 8592-1252
 e-mail: rockson@rockpower.cn

Junior Mechanical fittings

Standard series

Reducing Coupling

Plain End to Plain End



Main Dimensions

Unit: mm

Size	Pipe O.D.1		Pipe O.D.2		Fitting Overall			Body		Setting Gap		Weight
	SGP-PD *	HIVP * *	SGP-PD *	HIVP * *	A1	A2	B	L	t	Min	Max	Kg
20X15	30.2	26.0	24.7	22.0	55	49	73	60	3	6	12	0.4
25X15	37.0	32.0	24.7	22.0	66	49	78	65	4	7	17	0.4
25X20	37.0	32.0	30.2	26.0	66	55	79	65	4	7	12	0.5
32X15	45.7	42.0	24.7	22.0	73	49	84	70	4	8	23	0.5
32X20	45.7	42.0	30.2	26.0	73	55	84	70	4	8	19	0.5
32X25	45.7	42.0	37.0	32.0	73	66	85	70	4	8	19	0.5
40X15	52.6	48.0	24.7	22.0	80	49	89	75	4	8	29	0.7
40X20	52.6	48.0	30.2	26.0	80	55	90	75	4	8	24	0.7
40X25	52.6	48.0	37.0	32.0	80	66	90	75	4	8	24	0.8
40X32	52.6	48.0	45.7	42.0	80	73	91	75	4	8	26	0.8
50X15	64.5	60.0	24.7	22.0	96	49	95	80	5	10	34	1.0
50X20	64.5	60.0	30.2	26.0	96	55	95	80	5	10	29	1.1
50X25	64.5	60.0	37.0	32.0	96	66	96	80	5	10	29	1.1
50X32	64.5	60.0	45.7	42.0	96	73	96	80	5	10	31	1.2
50X40	64.5	60.0	52.6	48.0	96	80	97	80	5	10	31	1.2

* JWWA K 132: Polyethylene powder-coated steel pipe for water supply.

* * JIS K 6742: Unplasticized poly (vinyl chloride) (PVC-U) pipes for water supply or other Imperial pipes including PVC pipe, PE Pipe, ABS pipe and Steel pipe.



Qingdao Rockpower Machinery Co., Ltd.

1506, Sino-Commerce Building, 100, Middle Hongkong Road, Qingdao, China
www.rockpower.cn

Tel.: (0532) 8592-1910 8592-1920 Fax.: (0532) 8592-1252
e-mail: rockson@rockpower.cn

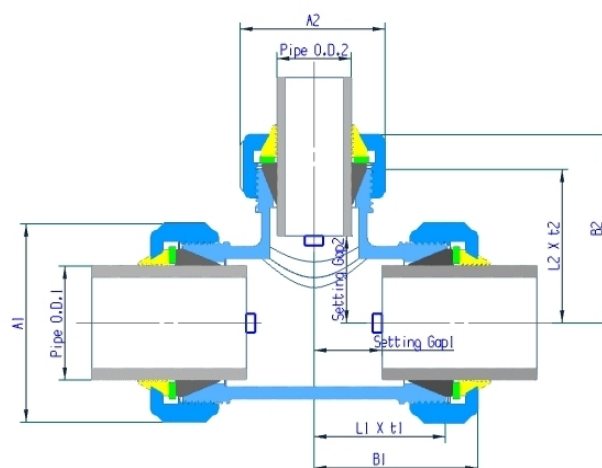
Junior Mechanical fittings

Standard series

Reducing Tee



Plain End to Plain End



Main Dimensions

Unit:

Size	SGP-PD *		HIVP * *		Fitting Overall				Body				Setting Gap		Weight
	O.D.1	O.D.2	O.D.1	O.D.2	A1	A2	B1	B2	L1	L2	t1	t2	1 Min	2 Min	Kg
20X15	30.2	24.7	26.0	22.0	55	49	51	37	41	28	3	3	16	19	0.6
25X15	37.0	24.7	32.0	22.0	66	49	53	37	43	28	4	3	16	22	0.7
25X20	37.0	30.2	32.0	26.0	66	55	56	43	46	34	4	3	19	22	0.8
32X15	45.7	24.7	42.0	22.0	73	49	55	37	44	28	4	3	16	27	0.9
32X20	45.7	30.2	42.0	26.0	73	55	59	43	48	34	4	3	19	22	1.0
32X25	45.7	37.0	42.0	32.0	73	66	64	50	53	40	4	4	22	27	1.1
40X15	52.6	24.7	48.0	22.0	80	49	57	37	46	28	4	3	16	30	1.2
40X20	52.6	30.2	48.0	26.0	80	55	63	43	52	34	4	3	19	22	1.3
40X25	52.6	37.0	48.0	32.0	80	66	66	50	55	40	4	4	22	27	1.3
40X32	52.6	45.7	48.0	42.0	80	73	68	59	57	48	4	4	27	30	1.4
50X15	64.5	24.7	60.0	22.0	96	49	60	37	48	28	5	3	16	36	1.7
50X20	64.5	30.2	60.0	26.0	96	55	63	43	51	34	5	3	19	36	2.0
50X25	64.5	37.0	60.0	32.0	96	66	68	50	56	40	5	4	22	36	2.0
50X32	64.5	45.7	60.0	42.0	96	73	72	59	60	48	5	4	27	36	2.1
50X40	64.5	52.6	60.0	48.0	96	80	76	66	64	55	5	4	30	36	2.2

* JWWA K 132: Polyethylene powder-coated steel pipe for water supply.

* * JIS K 6742: Unplasticized poly (vinyl chloride) (PVC-U) pipes for water supply or other Imperial pipes including PVC pipe, PE Pipe, ABS pipe and Steel pipe.



Qingdao Rockpower Machinery Co., Ltd.

1506, Sino-Commerce Building, 100, Middle Hongkong Road, Qingdao, China
www.rockpower.cn

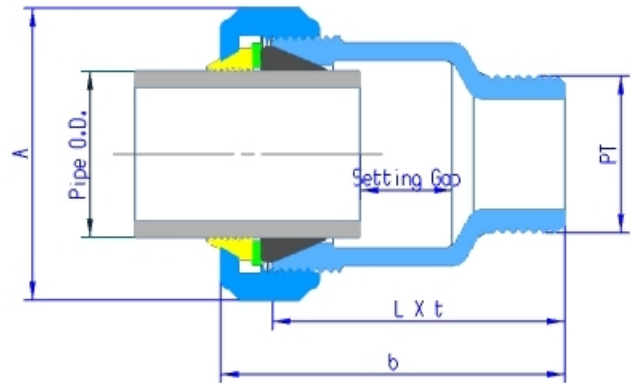
Tel.: (0532) 8592-1910 8592-1920 Fax.: (0532) 8592-1252
 e-mail: rockson@rockpower.cn

Junior Mechanical fittings

Standard series

Socket Nipple

Plain End to Male PT Thread



Main Dimensions

Unit: mm

Size	Pipe O.D.		Coupling Overall		Body		Setting Gap		PT	Weight
	SGP-PD *	HIVP * *	A	B	L	t	Min	Max	PT-n	Kg
15	24.7	22.0	49	64	55	3	3	14	1/2"-14	0.2
20	30.2	26.0	55	70	60	3	3	8	3/4"-14	0.3
25	37.0	32.0	66	75	65	3	4	9	1"-11	0.4
32	45.7	42.0	73	81	70	4	5	13	1 1/4"-11	0.5
40	52.6	48.0	80	86	75	4	5	17	1 1/2"-11	0.7
50	64.5	60.0	96	92	80	5	7	18	2"-11	1.1

* JWWA K 132: Polyethylene powder-coated steel pipe for water supply.

* * JIS K 6742: Unplasticized poly (vinyl chloride) (PVC-U) pipes for water supply or other Imperial pipes including PVC pipe, PE Pipe, ABS pipe and Steel pipe.



Qingdao Rockpower Machinery Co., Ltd.

1506, Sino-Commerce Building, 100, Middle Hongkong Road, Qingdao, China
www.rockpower.cn

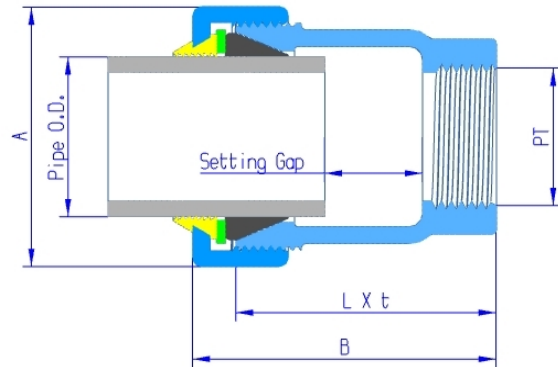
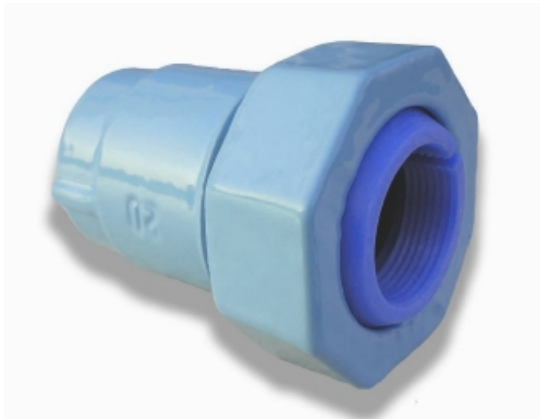
Tel.: (0532) 8592-1910 8592-1920 Fax.: (0532) 8592-1252
 e-mail: rockson@rockpower.cn

Junior Mechanical fittings

Standard series

Female Scocket Nipple

Plain End to Female PT Thread



Main Dimensions

Unit: mm

Size	Pipe O.D.		Coupling Overall		Body		Setting Gap		PT	Weight
	SGP-PD *	HIVP * *	A	B	L	t	Min	Max	PT-n	Kg
15	24.7	22.0	49	64	55	3	3	20	1/2"-14	0.2
20	30.2	26.0	55	65	55	3	3	13	3/4"-14	0.3
25	37.0	32.0	66	70	60	3	4	16	1"-11	0.5
32	45.7	42.0	73	76	65	4	5	22	1 1/4"-11	0.5
40	52.6	48.0	80	81	70	4	5	26	1 1/2"-11	0.7
50	64.5	60.0	96	87	75	5	7	29	2"-11	1.0

* JWWA K 132: Polyethylene powder-coated steel pipe for water supply.

* * JIS K 6742: Unplasticized poly (vinyl chloride) (PVC-U) pipes for water supply
or other Imperial pipes including PVC pipe, PE Pipe, ABS pipe and Steel pipe.

This item can be supplied without outlet for use as end cap or with outlet connectable with threaded fittings.

Outlet is available with 1/2", 3/4", 1", 1 1/4", 1 1/2" and 2" BSP or BSPT thread as per requirement.



Qingdao Rockpower Machinery Co., Ltd.

1506, Sino-Commerce Building, 100, Middle Hongkong Road, Qingdao, China
www.rockpower.cn

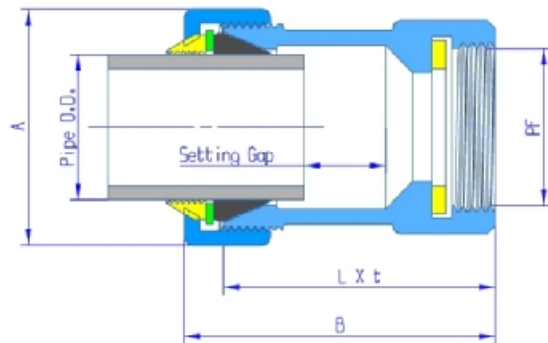
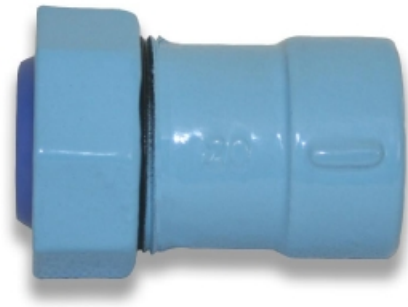
Tel.: (0532) 8592-1910 8592-1920 Fax.: (0532) 8592-1252
e-mail: rockson@rockpower.cn

Junior Mechanical fittings

Standard series

Water Scoke

Plain End to Female PF Thread



Main Dimensions

Unit: mm

Size	Pipe O.D.		Coupling Overall		Body		Setting Gap		PF	Weight
	SGP-PD *	HIVP * *	A	B	L	t	Min	Max	PF-n	Kg
15	24.7	22.0	49	68	59	3	3	26	3/4"-14	0.2
20	30.2	26.0	55	74	64	3	3	27	1"-11	0.4
25	37.0	32.0	66	79	69	3	4	28	1 1/4"-11	0.5
32	45.7	42.0	73	78	67	4	5	25	1 1/2"-11	0.7
40	52.6	48.0	80	86	75	4	5	33	2"-11	0.9
50	64.5	60.0	96	97	85	5	7	39	2 1/2"-11	1.4

* JWWA K 132: Polyethylene powder-coated steel pipe for water supply.

* * JIS K 6742: Unplasticized poly (vinyl chloride) (PVC-U) pipes for water supply
or other Imperial pipes including PVC pipe, PE Pipe, ABS pipe and Steel pipe.

This item can be supplied without outlet for use as end cap or with outlet connectable with threaded fittings.

Outlet is available with 1/2", 3/4", 1", 1 1/4", 1 1/2" and 2" BSP or BSPT thread as per requirement.



Qingdao Rockpower Machinery Co., Ltd.

1506, Sino-Commerce Building, 100, Middle Hongkong Road, Qingdao, China
www.rockpower.cn

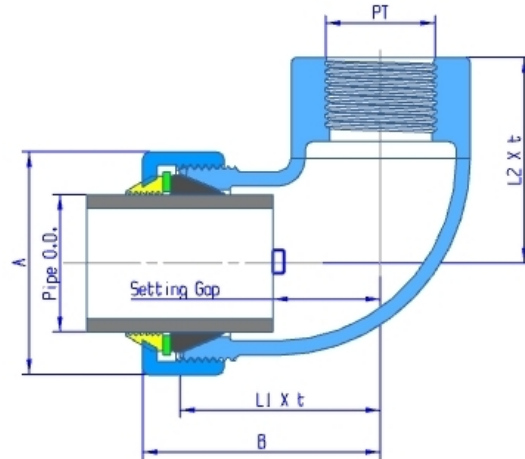
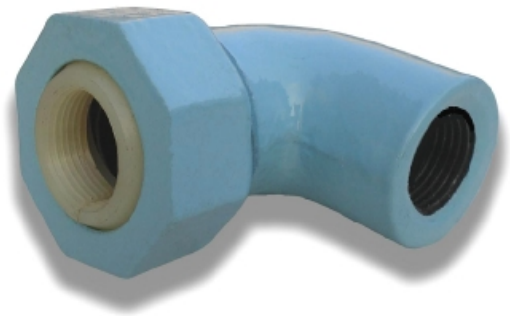
Tel.: (0532) 8592-1910 8592-1920 Fax.: (0532) 8592-1252
e-mail: rockson@rockpower.cn

Junior Mechanical fittings

Standard series

Socket Elbow

Plain End to Femail PT Thraed



Main Dimensions

Size	Pipe O.D.		Fitting Overall		Body			Setting Gap		PT	Unit: mm
	SGP-PD *	HIVP * *	A	B	L1	L2	t	Min	Max	PT-n	Weight Kg
15	24.7	22.0	49	51	42	42	3	15	20	1/2"-14	0.3
20	30.2	26.0	55	58	48	48	3	19	21	3/4"-14	0.4
25	37.0	32.0	66	64	54	54	3	22	27	1"-11	0.6

* JWWA K 132: Polyethylene powder-coated steel pipe for water supply.

* * JIS K 6742: Unplasticized poly (vinyl chloride) (PVC-U) pipes for water supply or other Imperial pipes including PVC pipe, PE Pipe, ABS pipe and Steel pipe.



Qingdao Rockpower Machinery Co., Ltd.

1506, Sino-Commerce Building, 100, Middle Hongkong Road, Qingdao, China
www.rockpower.cn

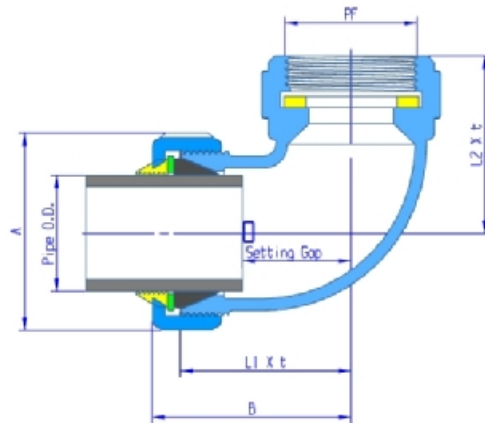
Tel.: (0532) 8592-1910 8592-1920 Fax.: (0532) 8592-1252
 e-mail: rockson@rockpower.cn

Junior Mechanical fittings

Standard series

Water Scocket Elbow

Plain End to Female PF Thread



Main Dimensions

Unit: mm

Size	Pipe O.D.		Coupling Overall		Body			Setting Gap		PF	Weight
	SGP-PD *	HIVP * *	A	B	L1	L2	t	Min	Max	PF-n	Kg
15	24.7	22.0	49	51	42	45	3	16	20	3/4"-14	0.4
20	30.2	26.0	55	58	48	51	3	20	21	1"-11	0.5
25	37.0	32.0	66	64	54	55	3	23	27	1 1/4"-11	0.6
32	45.7	42.0	73	73	62	65	4	28	36	1 1/2"-11	0.8
40	52.6	48.0	80	80	69	74	4	32	44	2"-11	1.2
50	64.5	60.0	96	91	79	88	5	39	55	2 1/2"-11	1.9

* JWWA K 132: Polyethylene powder-coated steel pipe for water supply.

* * JIS K 6742: Unplasticized poly (vinyl chloride) (PVC-U) pipes for water supply
or other Imperial pipes including PVC pipe, PE Pipe, ABS pipe and Steel pipe.



Qingdao Rockpower Machinery Co., Ltd.

1506, Sino-Commerce Building, 100, Middle Hongkong Road, Qingdao, China
www.rockpower.cn

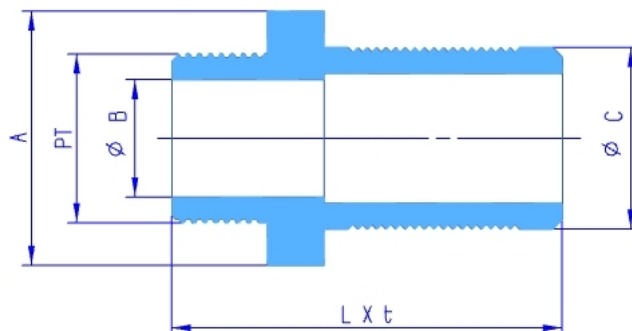
Tel.: (0532) 8592-1910 8592-1920 Fax.: (0532) 8592-1252
e-mail: rockson@rockpower.cn

Junior Mechanical fittings

Standard series

Nipple

Male PT Thread to Hose



Main Dimensions

Unit: mm

Size	Fitting Overall			Body		PT	Weight
	A	B	C	L	t	PT-n	Kg
15	38	13	25	66	6	1/2"-14	0.2
20	45	18	31	74	7	3/4"-14	0.3
25	52	24	37	82	6	1"-11	0.3
32	57	32	46	90	7	1 1/4"-11	0.5
40	65	37	52	97	7	1 1/2"-11	0.6
50	79	48	64	106	8	2"-11	1.0

* JWWA K 132: Polyethylene powder-coated steel pipe for water supply.

* * JIS K 6742: Unplasticized poly (vinyl chloride) (PVC-U) pipes for water supply



Qingdao Rockpower Machinery Co., Ltd.

1506, Sino-Commerce Building, 100, Middle Hongkong Road, Qingdao, China
www.rockpower.cn

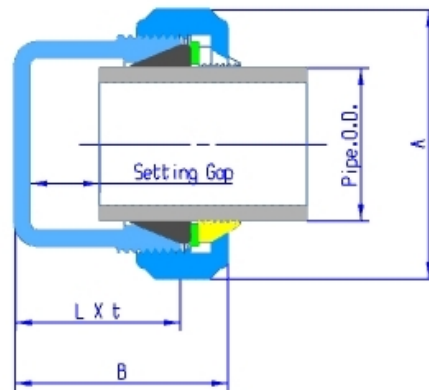
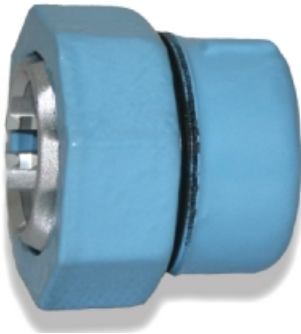
Tel.: (0532) 8592-1910 8592-1920 Fax.: (0532) 8592-1252
 e-mail: rockson@rockpower.cn

Junior Mechanical fittings

Standard series

Cap

Plain End to Pipe End



Main Dimensions

Unit: mm

Size	Pipe O.D.		Coupling Overall		Body		Setting Gap		Weight
	SGP-PD *	HIVP * *	A	B	L	t	Min	Max	Kg
15	24.7	22.0	49	39	30	3	3	8	0.2
20	30.2	26.0	55	45	35	3	3	8	0.3
25	37.0	32.0	66	50	40	4	4	13	0.4
32	45.7	42.0	73	56	45	4	5	19	0.5
40	52.6	48.0	80	61	50	4	5	25	0.6
50	64.5	60.0	96	67	55	5	7	31	1.1

* JWWA K 132: Polyethylene powder-coated steel pipe for water supply.

* * JIS K 6742: Unplasticized poly (vinyl chloride) (PVC-U) pipes for water supply or other Imperial pipes including PVC pipe, PE Pipe, ABS pipe and Steel pipe.



Qingdao Rockpower Machinery Co., Ltd.

1506, Sino-Commerce Building, 100, Middle Hongkong Road, Qingdao, China
www.rockpower.cn

Tel.: (0532) 8592-1910 8592-1920 Fax.: (0532) 8592-1252
 e-mail: rockson@rockpower.cn



Qingdao Rockpower Machinery Co., Ltd.

1506, Sino-Commerce Building, 100,
Middle Hongkong Road, Qingdao, China
www.rockpower.cn

Tel.: (0532) 8592-1910 8592-1920
Fax.: (0532) 8592-1252
e-mail: rockson@rockpower.cn